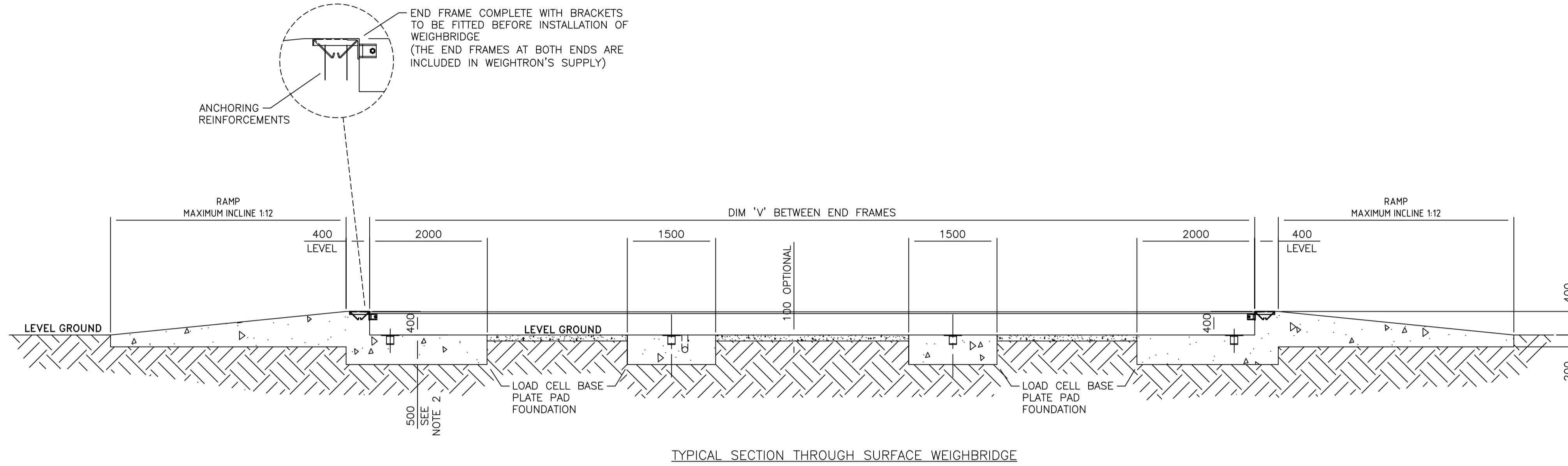
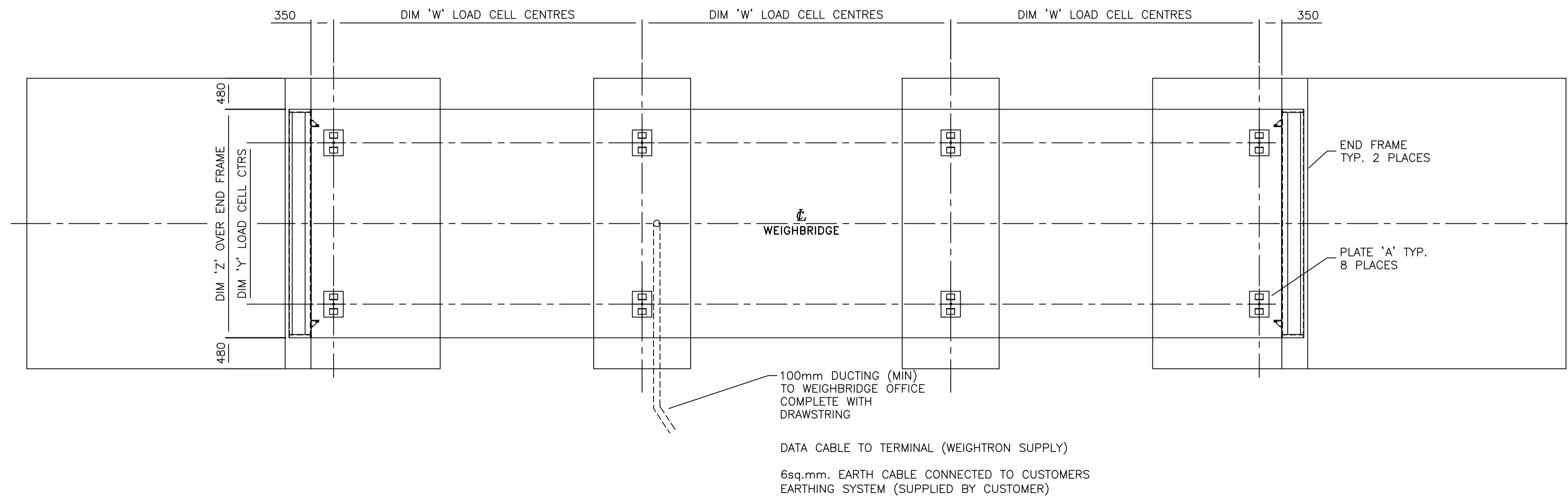


DIMENSIONS AND LOADS					
WEIGHBRIDGE SIZE	LOAD (kg)	DIM Z	DIM Y	DIM W	DIM V
18m x 3.0m	13000	3050	2200	5780	18040
18m x 3.2m		3250	2400		
18m x 3.5m		3550	2700		

NOTES
1. ALL MEASUREMENTS ARE IN MILLIMETRES UNLESS OTHERWISE SPECIFIED.



TYPICAL SECTION THROUGH SURFACE WEIGHBRIDGE



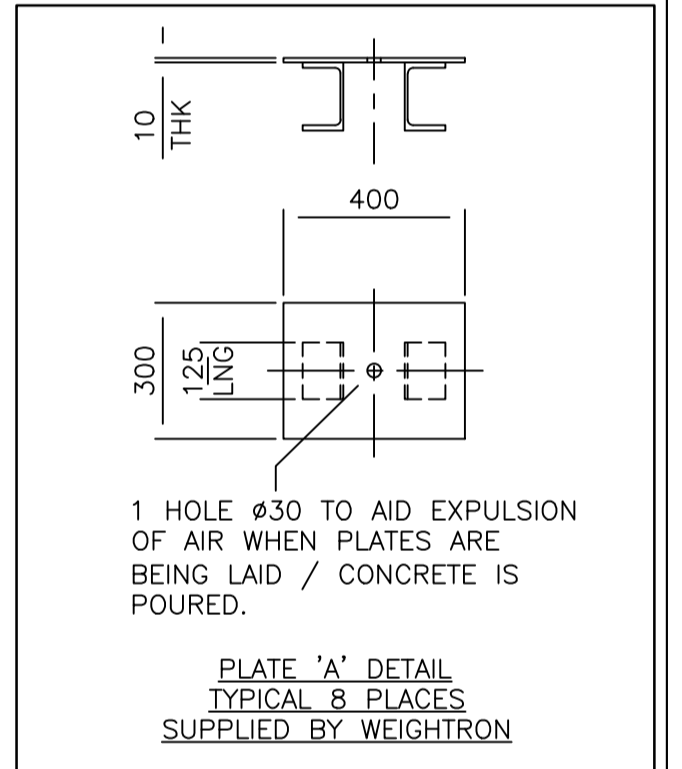
FOUNDATION LAYOUT FOR SURFACE WEIGHBRIDGE

FOUNDATION NOTES:

- THIS IS NOT A CONSTRUCTION DRAWING. CONCRETE PAD FOUNDATIONS ARE TO BE CONSTRUCTED TO THE CIVIL ENGINEERS DESIGN TO SUIT SITE CONDITIONS. FOUNDATION DETAILS ON THIS DRAWING CAN BE AMENDED TO SUIT GROUND CONDITIONS AND/OR CLIENTS REQUIREMENTS. SEE CIVIL ENGINEERING DRAWINGS FOR FULL CONSTRUCTION DETAILS.
- FOUNDATIONS TO BE APPROXIMATELY 500mm THICK DEPENDANT ON GROUND CONDITIONS. MINIMUM 35N/mm² CONCRETE DESIGNED TO RECEIVE A VERTICAL LOAD ON EACH OF THE LOAD CELL BASE PLATES MARKED 'A'. MAGNITUDE OF LOAD AS SPECIFIED IN THE DIMENSIONS & LOADS TABLE.

LOAD CELL BASE PLATES (MARKED 'A'):

- IT IS EXTREMELY IMPORTANT TO AVOID ANY AIR POCKETS BEING FORMED UNDER THE LOAD CELL BASE PLATES
- THE TOPS OF ALL LOAD CELL BASE PLATES ARE TO BE LEVEL TO +/- 2mm



EXTENT OF SUPPLY:

- END FRAMES x2 ARE INCLUDED IN WEIGHTRON'S SUPPLY
- LOAD CELL BASE PLATES (DETAIL 'A') x8 ARE INCLUDED IN WEIGHTRON'S SUPPLY

LOADS:

- LOADS AS SPECIFIED IN THE 'DIMENSIONS AND LOADS' TABLE ACT VERTICALLY DOWN ONTO THE LOAD CELL BASE PLATES IN 8 LOCATIONS. THE FIGURE STATED IN THE TABLE IS PER LOAD CELL BASE PLATE.



HIVE
AGGREGATES

SLR
global environmental solutions

2nd and 3rd FLOORS
15 MIDDLE PAVEMENT
NOTTINGHAM
NG1 7DZ
T: 01159 547200
F: 01159 751576
www.slronline.com

LOUND
PLANNING APPLICATION
WEIGHBRIDGE
ELEVATIONS

011

Scale: 1:50 @ A1
Date: FEBRUARY 2023