

Illustrative View - Lefthand



Illustrative View - Righthand

Retford Circular Economy Project



Viewpoint Location: 468118E 383647N
 View Direction: 91°
 Camera Elevation: 15m AOD
 Distance to Development: 0.36km
 Horizontal Field of View: 180 degrees
 Date of Photography: 26.09.2022

Paper Size: 420 mm x 297 mm
 Image Size: 109.5 mm x 398 mm
 Camera: Nikon D3
 Lens: 50 mm
 Camera Height: 1.5 m
 Time of Photography: 12:28

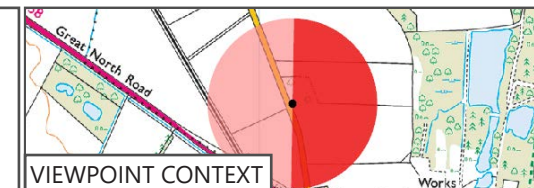
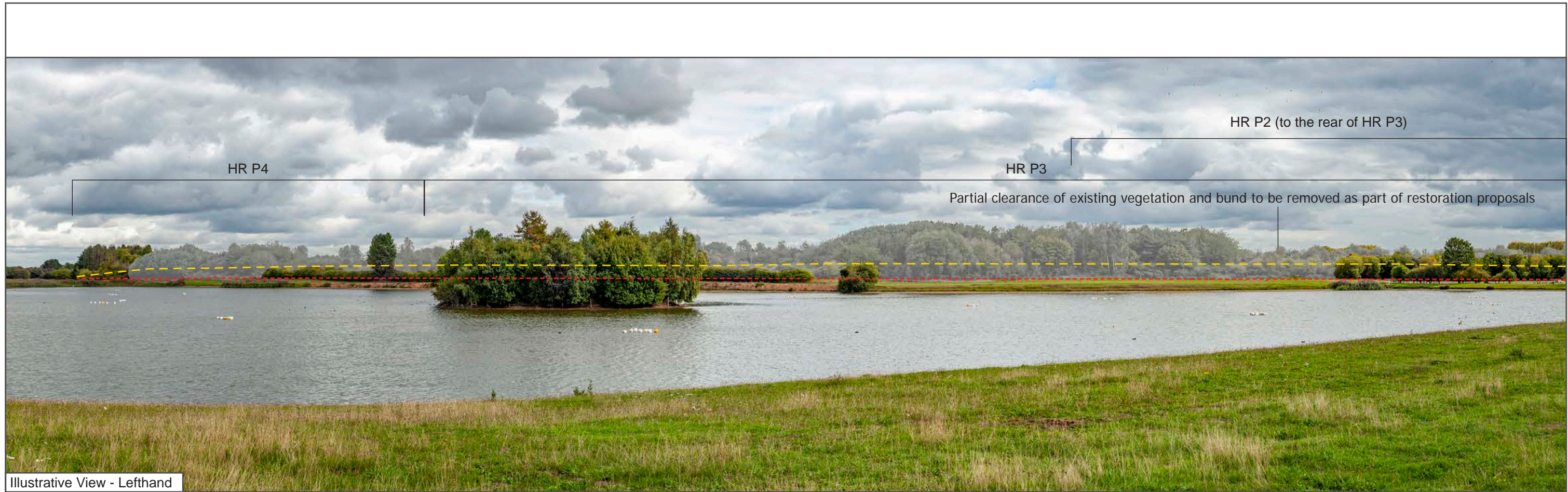


Figure:7.15

Illustrative View - Viewpoint 7:
 Sutton Lane North of Cross Road Farm



Illustrative View - Lefthand



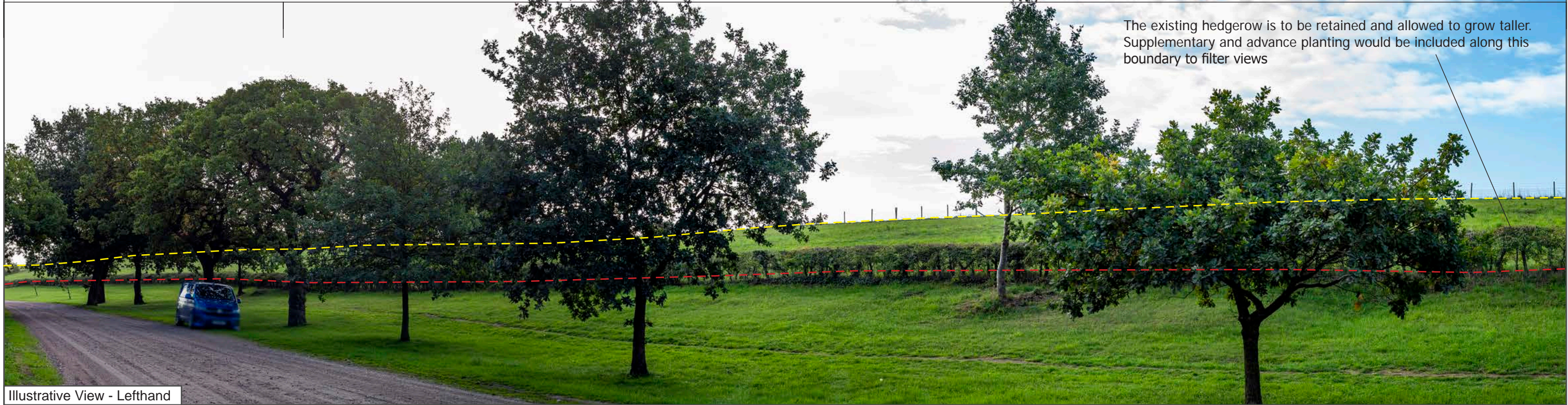
Illustrative View - Righthand

- - - Existing Ground Level (Approx.)
 - - - Proposed Ground Level (Approx.)

HR P6

HR P5

The existing hedgerow is to be retained and allowed to grow taller. Supplementary and advance planting would be included along this boundary to filter views

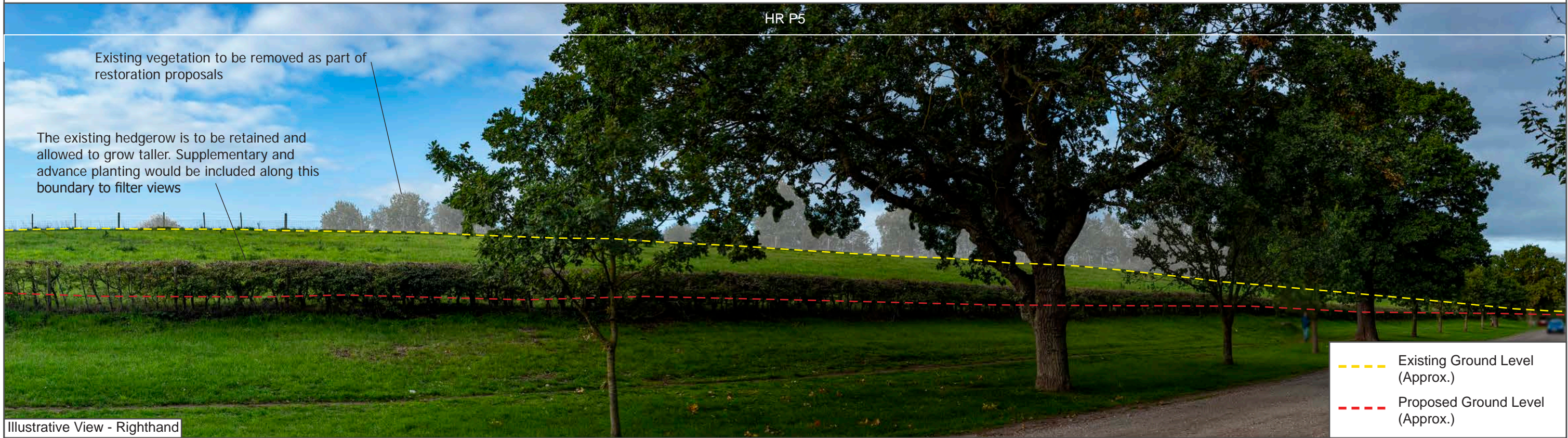


Illustrative View - Lefthand

HR P5

Existing vegetation to be removed as part of restoration proposals

The existing hedgerow is to be retained and allowed to grow taller. Supplementary and advance planting would be included along this boundary to filter views



Illustrative View - Righthand

- - - Existing Ground Level (Approx.)
- - - Proposed Ground Level (Approx.)

Retford Circular Economy Project



Viewpoint Location: 469360E 385148N
 View Direction: 183°
 Camera Elevation: 15m AOD
 Distance to Development: On Site Boundary
 Horizontal Field of View: 180 degrees
 Date of Photography: 26.09.2022

Paper Size: 420 mm x 297 mm
 Image Size: 111.25 mm x 398 mm
 Camera: Nikon D3
 Lens: 50 mm
 Camera Height: 1.5 m
 Time of Photography: 08:48



Figure:7.17

Illustrative View - Viewpoint 11: Lound Low Road at Wetland Fisheries