



RETFORD
CIRCULAR ECONOMY PROJECT

Retford Circular Economy Project (RCEP) webinar

04 October 2022



RETford
CIRCULAR ECONOMY PROJECT

Agenda

1. Introductions
2. Project overview
3. Programme and consultation
4. The Site
5. Environmental impacts
6. Traffic & transport
7. Environmental opportunities
8. How to get in touch
9. Q&A



RETford
CIRCULAR ECONOMY PROJECT

Introductions

Project Team

- Jake Barnes-Gott – Hive Aggregates
- Colin Turnbull – DWD
- Alix Clarke – Arcus
- Ali Parker – Counter Context
- Henry Lock – Counter Context



RETford
CIRCULAR ECONOMY PROJECT

Project Overview

- Traditional cement is highly polluting; RCEP proposes a sustainable alternative.
- RCEP is a new project which aims to extract pulverised fuel ash (PFA) waste from a former landfill site, recycling it into a sustainable cement substitute using innovative technology.
- RCEP would extract around 300,000 tonnes of PFA a year, with an operational lifespan of 22-25 years.
- The project would:
 - save up to 5.3 million tonnes of carbon over its lifetime;
 - reduce the use of natural resources by recycling waste;
 - secure a continued supply of sustainable building products;
 - reduce the need to import building products from abroad; and
 - create around 20 full time jobs.
- PFA is classed as a mineral resource of national importance, and its use is supported by national and local planning policy.



RETford
CIRCULAR ECONOMY PROJECT

Programme and consultation

- Our community consultation is running from 29th September to 26th October.
- During this time we are welcoming feedback to our proposals from local residents and stakeholders.
- We are running two public information events in Sutton-Cum-Lound and Lound on the 6th October and 10th October respectively.
- Still very early in the planning process.
- Proposed to submit planning application in December 2022 or early 2023.
- Giving ample time to consider all comments received.



RETfORD
CIRCULAR ECONOMY PROJECT

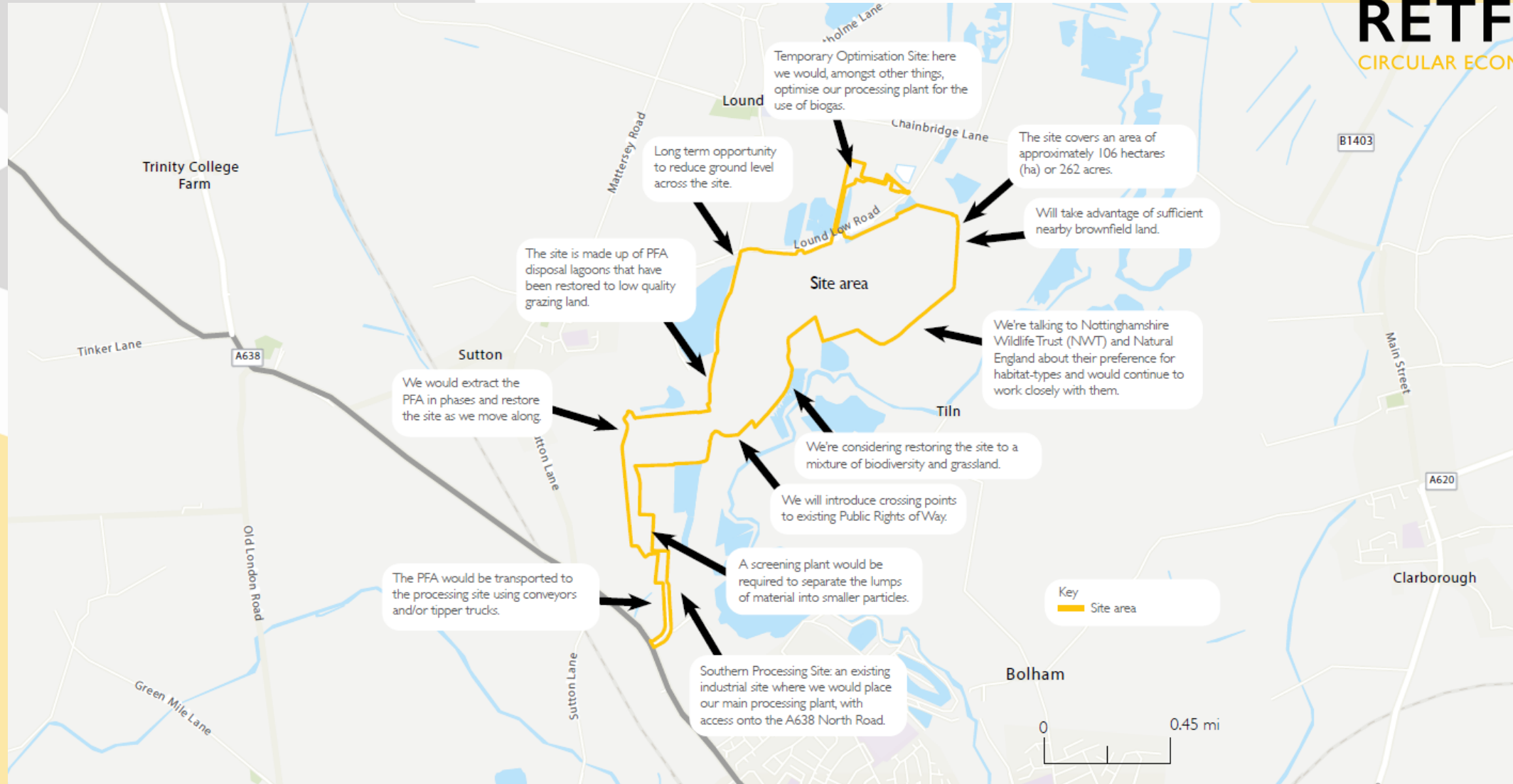
The Site

- The area of the site is just under 117 hectares (289 acres).
- The main section of the Site is comprised of former PFA disposal lagoons that have been re-instated for agricultural use (low quality grazing land).
- PFA deposited from 1970s to early 2000s.
- The area has historically been subject to a significant amount of sand and gravel extraction and is therefore not alien to extractive industries.

The Site: Map



RET FORD
CIRCULAR ECONOMY PROJECT



The Site: Aerial Photos

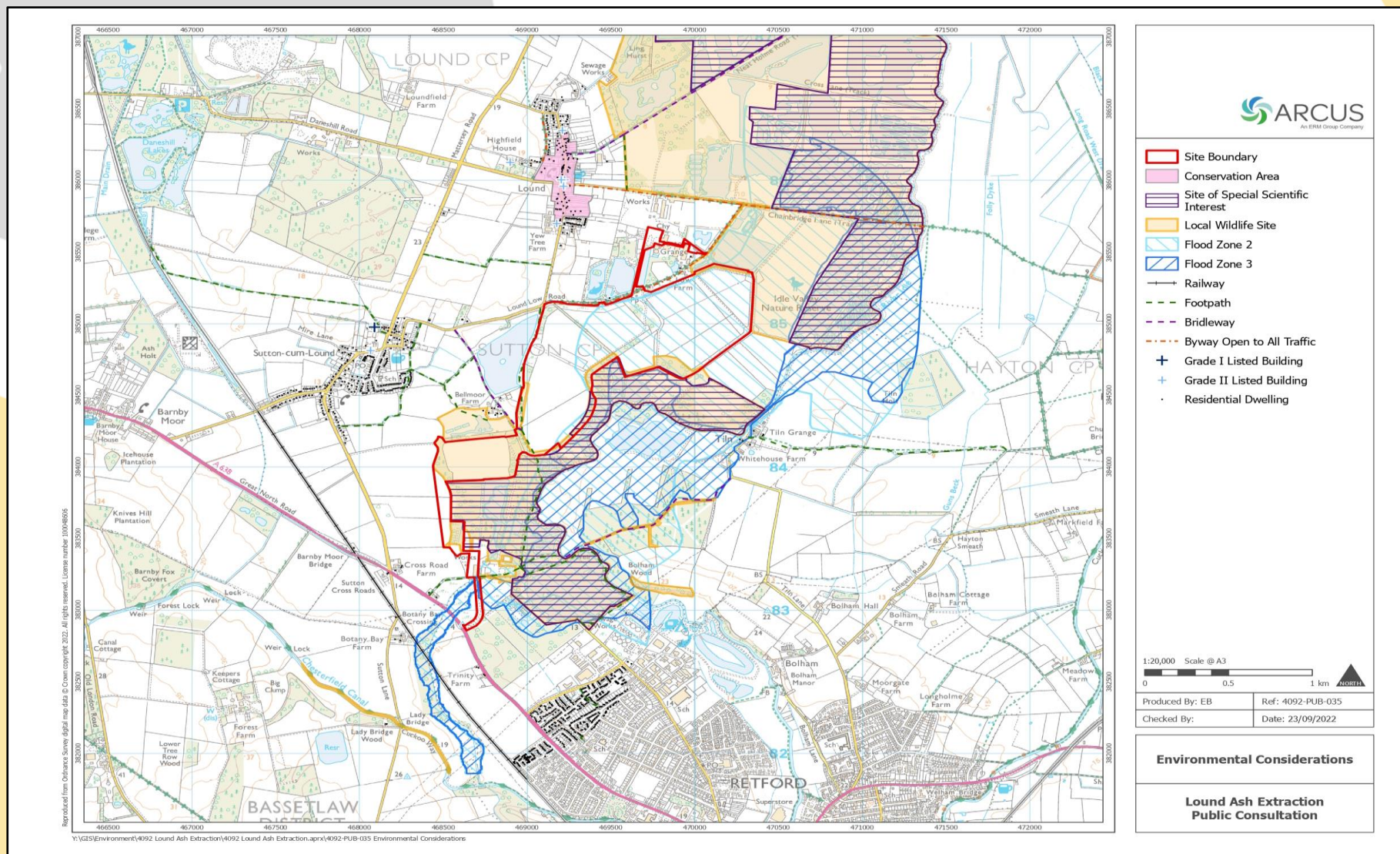


RET福德
CIRCULAR ECONOMY PROJECT





The Site: Environmental Considerations





Environmental opportunities and impacts

- A full Environmental Impact Assessment is in the process of being carried out.
- Topics subject to assessment include:
 - Noise;
 - Air quality, including dust;
 - Ecology;
 - Traffic;
 - Landscape & visual; and
 - Hydrology.
- The EIA will assess the potential impact of the project, and will include management and mitigation measures where necessary.



Traffic and transport

- A638 would be the only access when at full production.
- There will be full management plan for traffic during construction and operation, including agreed routes to the strategic highway network.
- All HGVs leaving site will be fully enclosed powder tankers.
- Hours for extraction and HGV exports limited to:
 - 07:00 and 19:00 Monday to Friday; and
 - 07:00 to 13:00 Saturday, with no HGV movements on Sundays or Bank Holidays.
- During operation it is estimated there would around one vehicle leaving the site every 20 minutes (around 3-4 per hour).
- Studies so far indicate that there is more than enough capacity on the A638 to accommodate the proposed level of traffic.



Environmental opportunities

- Significant environmental opportunities through site restoration, in addition to carbon savings and reducing use of natural resources.
- We are working with Nottinghamshire Wildlife Trust and Natural England, and other local stakeholders, to understand their aspirations for the restoration of the site and their respective desired habitat types.
- These will then be incorporated into our planning application, including an outline design for the restoration plans.
- The restoration scheme would likely comprise a mixture of biodiversity led land-use and agriculture, including wet meadow, reed beds, ponds, and pasture.



RETford
CIRCULAR ECONOMY PROJECT

How to get in touch

Contact lines:

- Email: info@retfordcep.co.uk
 - Freephone: [0808 169 5659](tel:08081695659)
 - Freepost: FREEPOST RCEP
 - Website: www.retfordcep.co.uk
- An online feedback form will be available for anyone who wishes to log their feedback online. Alternatively, stakeholders can provide feedback using the contact details above.

Any Questions?



RETfORD
CIRCULAR ECONOMY PROJECT